



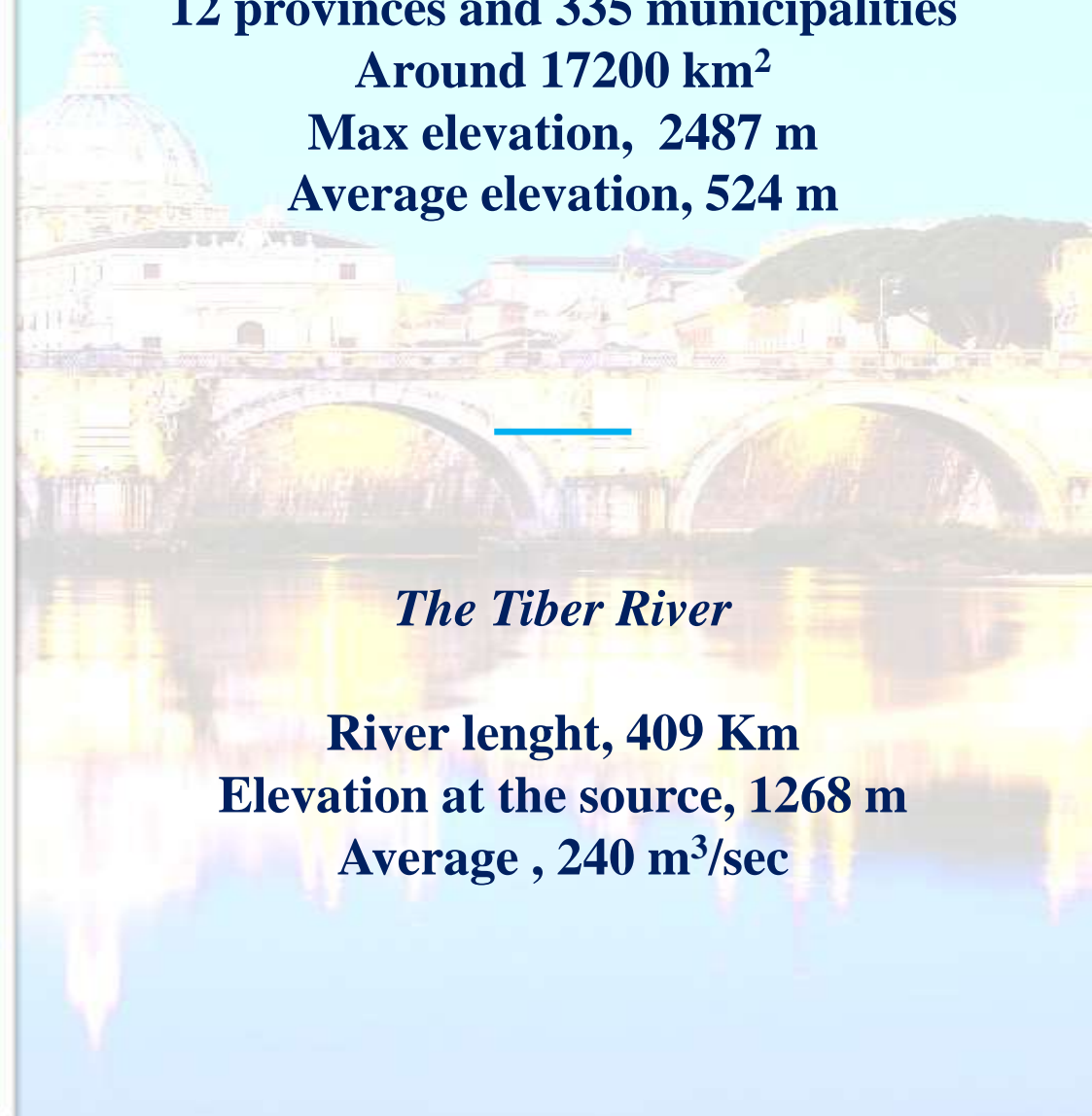
The Tiber River Basin

**Distributed on 6 regions (departments),
12 provinces and 335 municipalities**

Around 17200 km²

Max elevation, 2487 m

Average elevation, 524 m



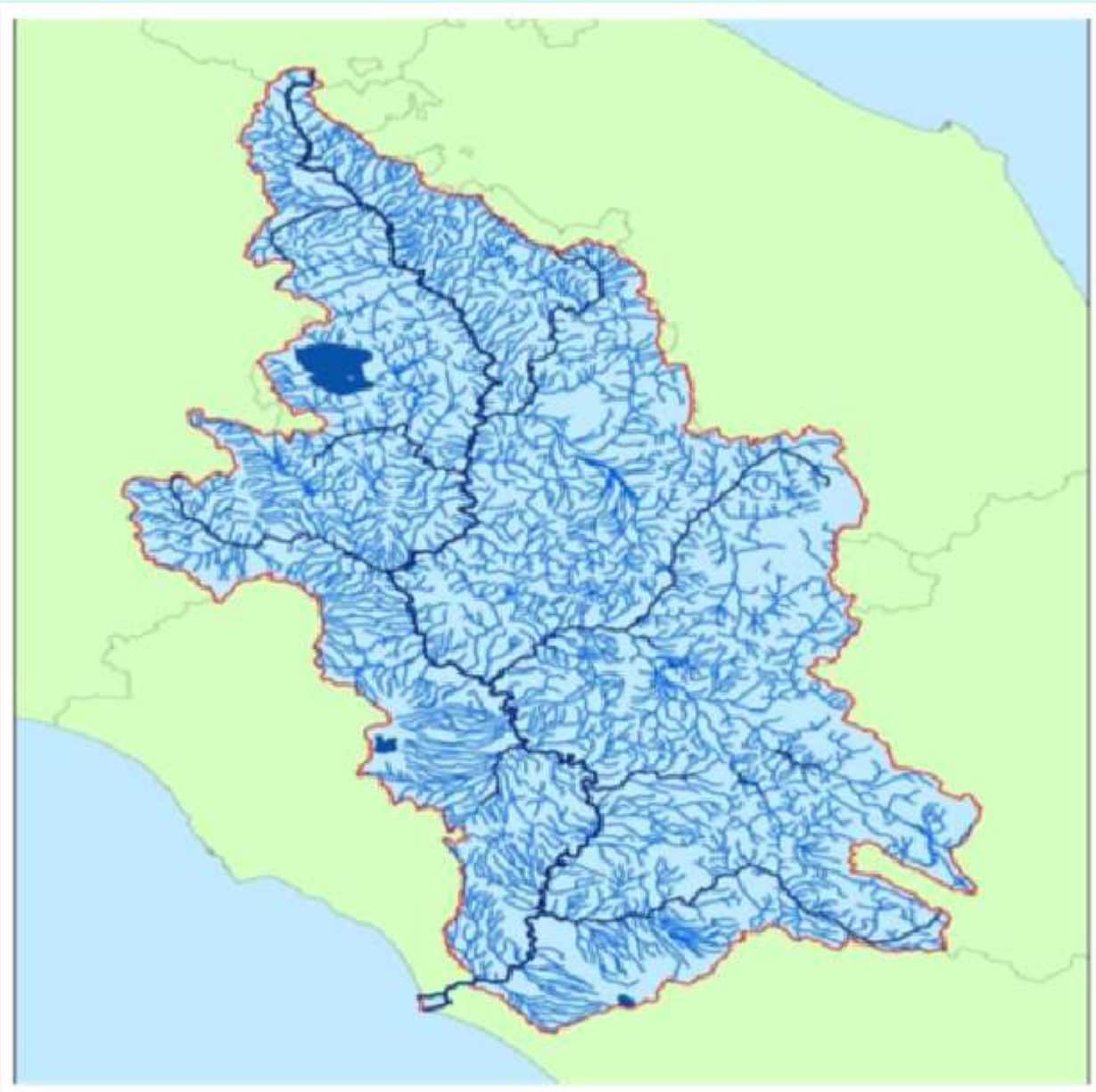
The Tiber River

River length, 409 Km

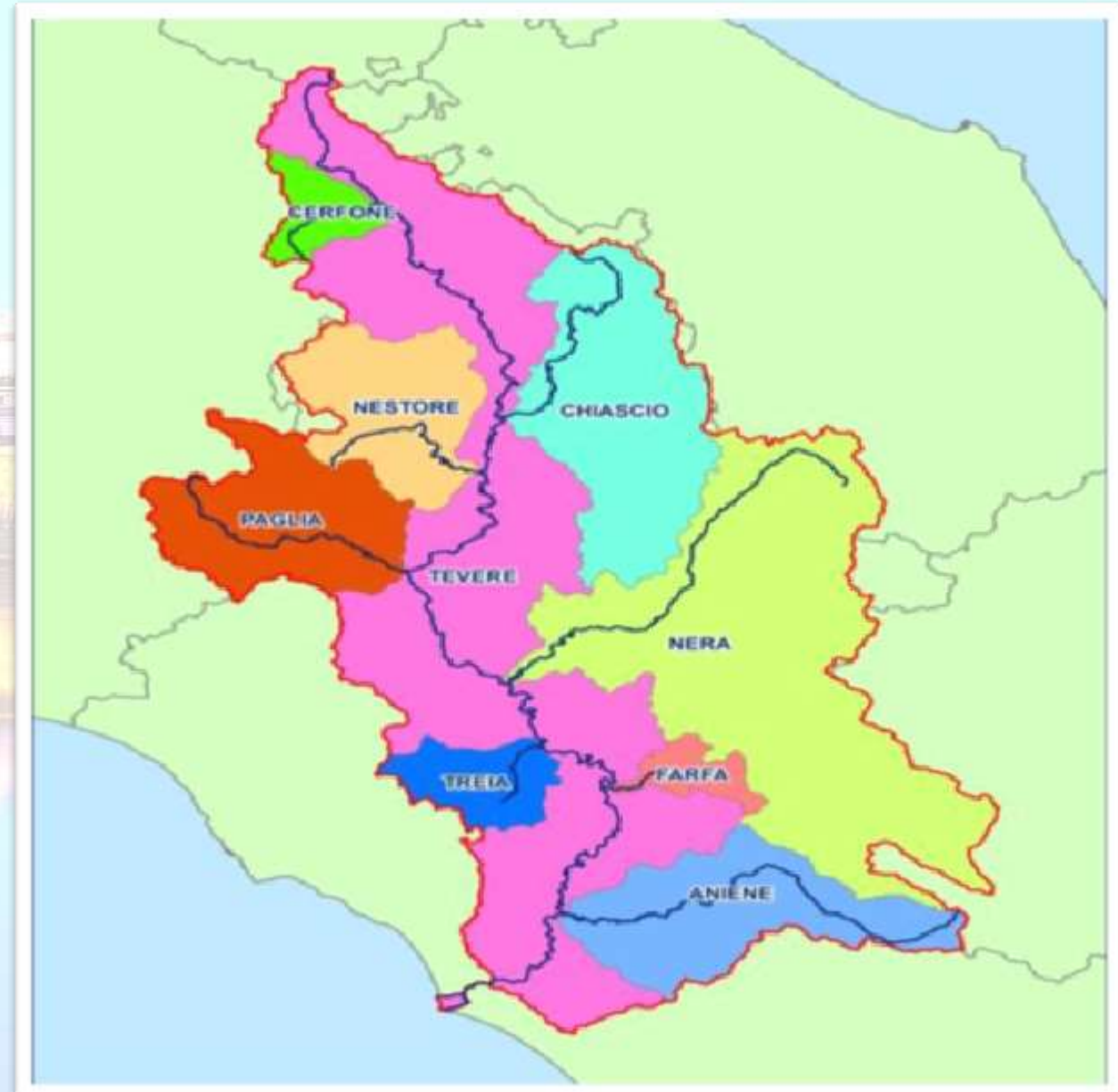
Elevation at the source, 1268 m

Average , 240 m³/sec

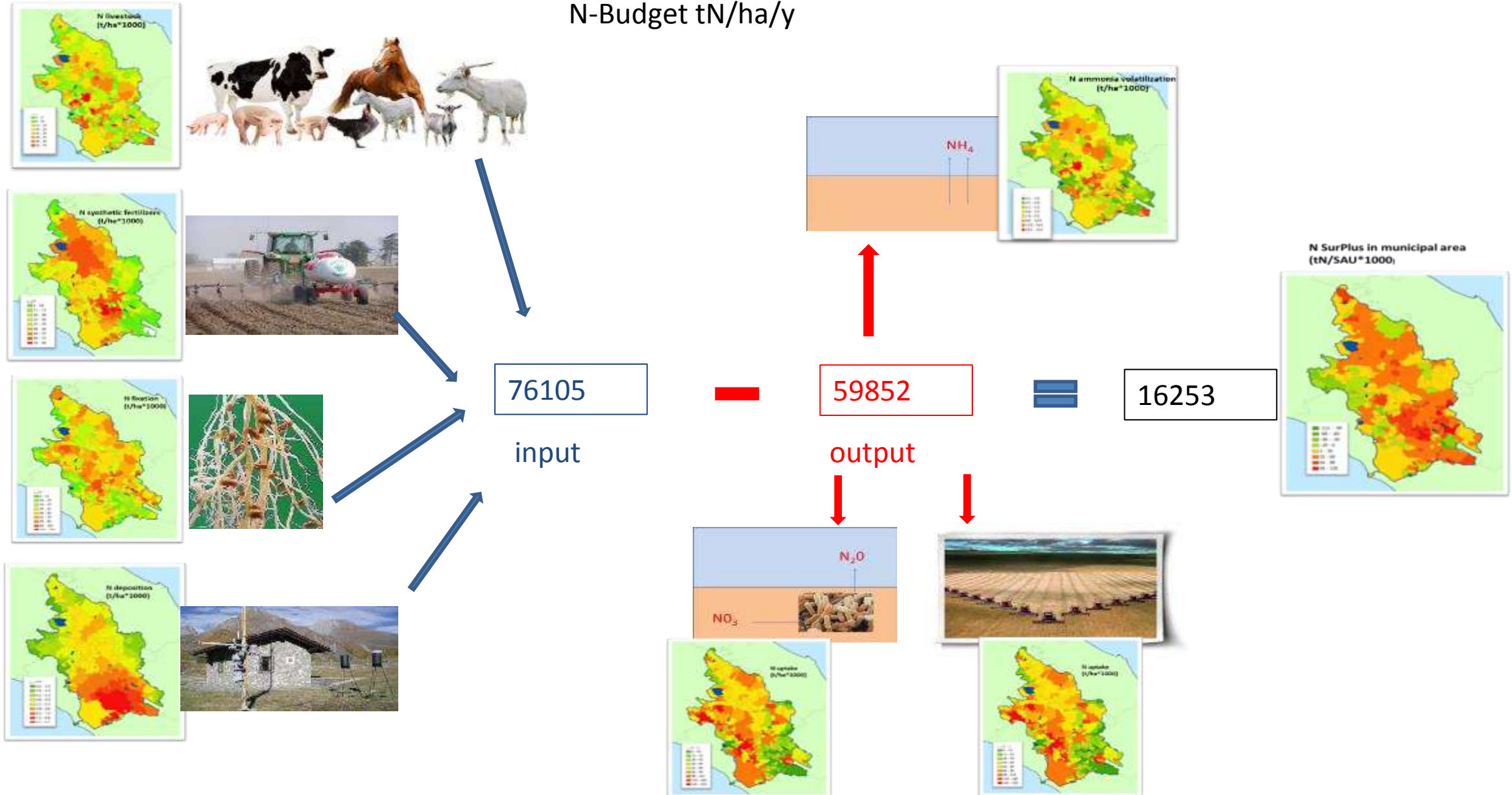
The Tiber river branching

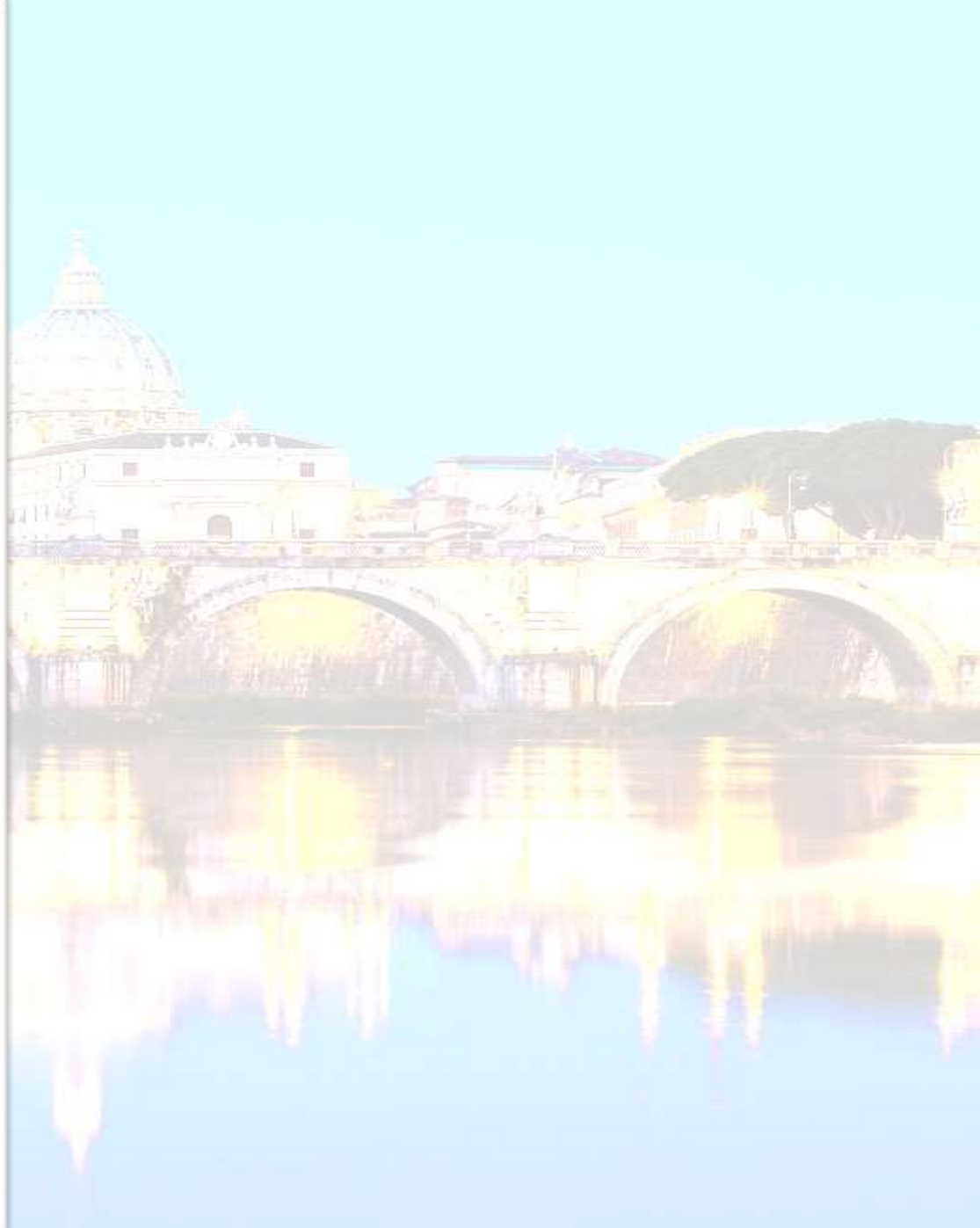
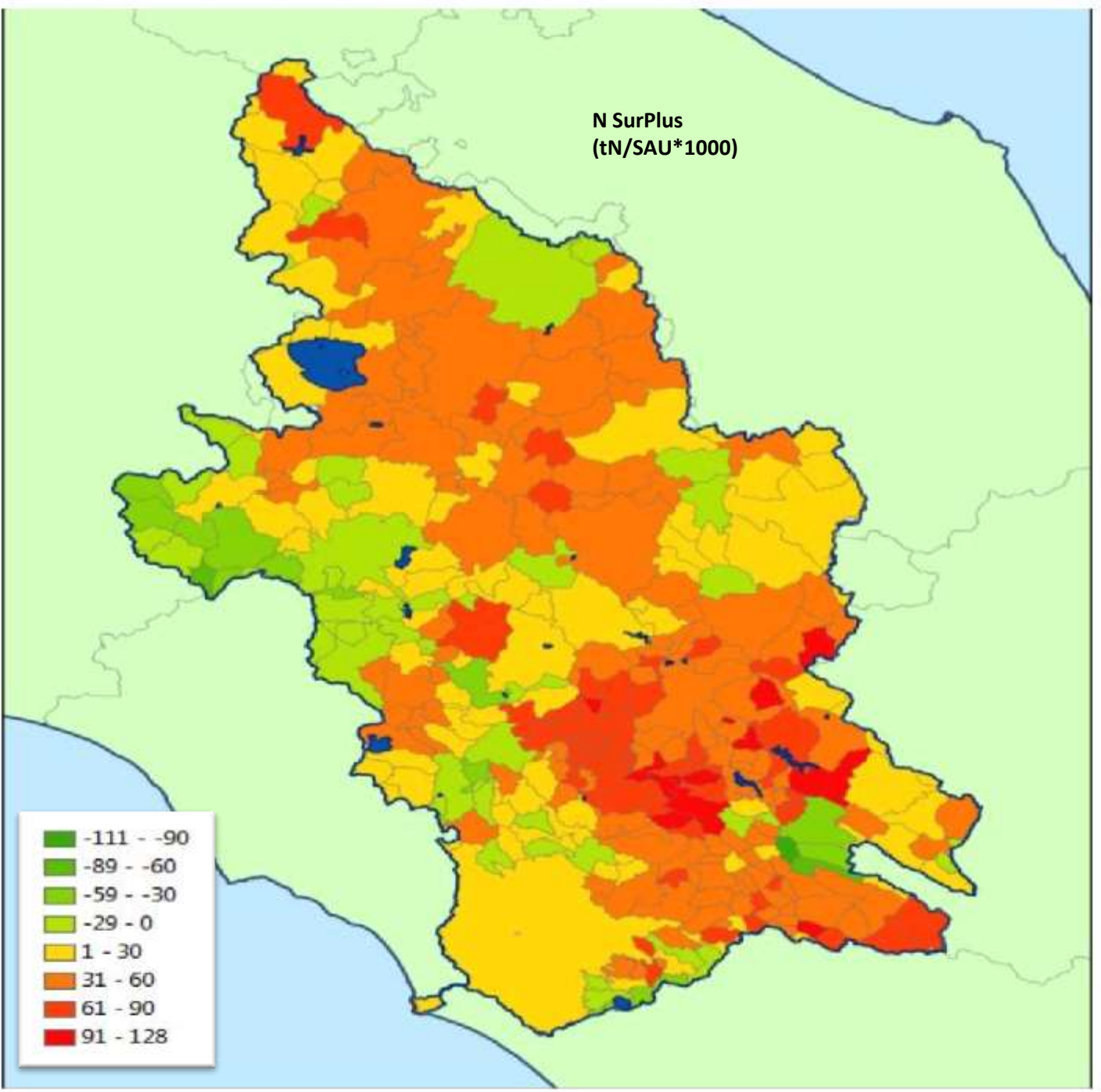


The Tiber sub-drainage basins

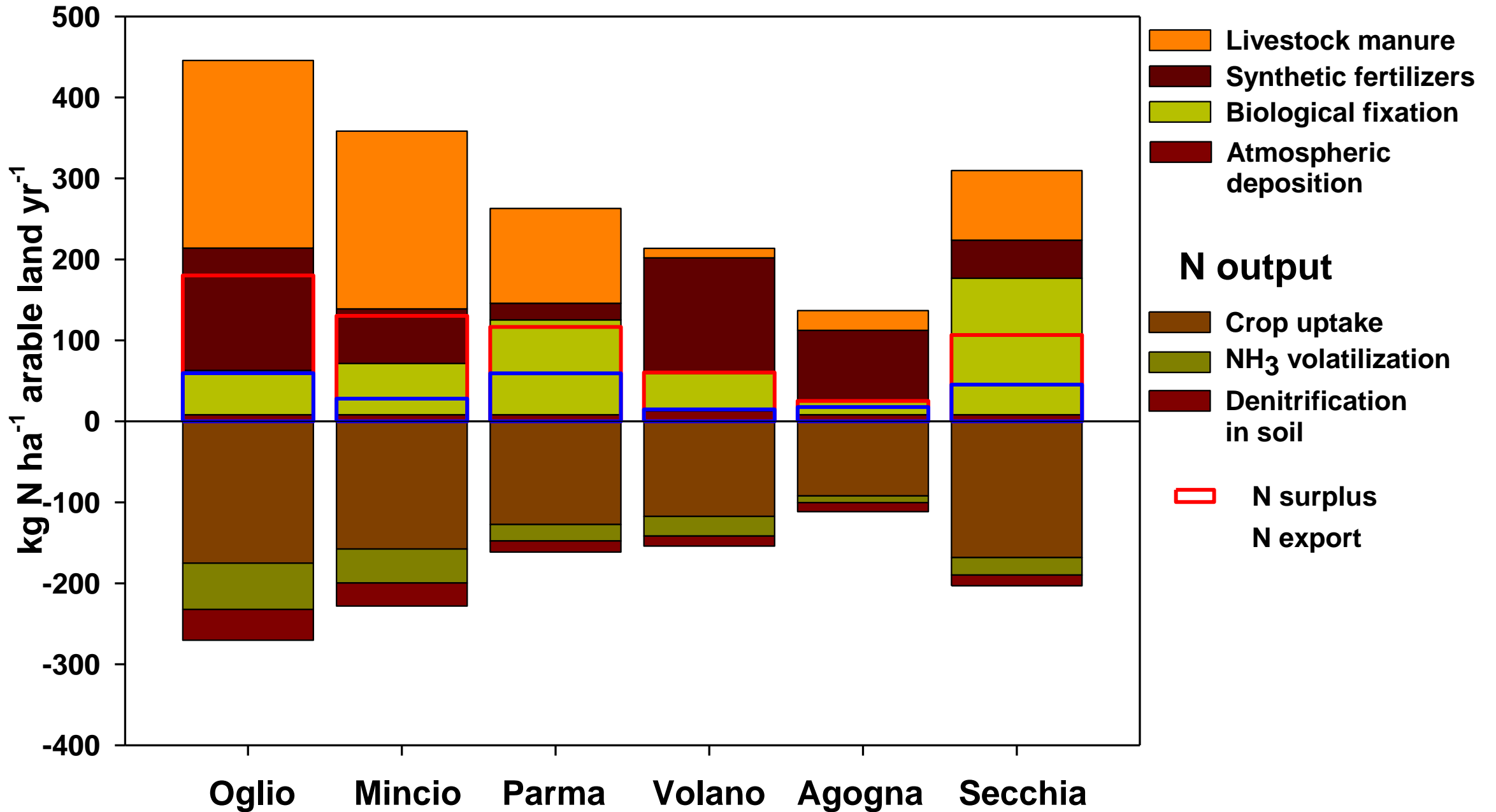


River Tevere: N-Budget tN/ha/y





N budgets in 6 sub-basins of the Po river



Future objectives of INN

- To compile the balance for all the Italian rivers where we found voluntaries
- To compare the surplus of the basins compiled with measurements of the outflows at the end of the rivers and try to explain the N fate
- To compare different basins with different vocation (i.e. agriculture, highly urbanized etc.)
- To disseminate the results by scientific publications
- To integrate INN with other international networks already existing
- To search for funding to support this activity
- To increase the cooperation between national nitrogen expert
- To build a methodology that is open and that can be updated, if necessary
- To include in the methodology other nutrients (i.e. phosphorous)